

ez bus dt

STORAGE & BACKUP SOLUTION

USER GUIDE



THE LEADER IN PERSONAL STORAGE

Copyright © Apricorn, Inc. 2004. All rights reserved.

Windows and MS-DOS are registered trademarks of Microsoft Corporation.

All other trademarks and copyrights referred to are the property of their respective owners.

Distribution of substantively modified versions of this document is prohibited without the explicit permission of the copyright holder.

Distribution of the work or derivative work in any standard (paper) book form for commercial purposes is prohibited unless prior permission is obtained from the copyright holder.

DOCUMENTATION IS PROVIDED AS IS AND ALL EXPRESS OR IMPLIED CONDITIONS, REPRESENTATIONS AND WARRANTIES, INCLUDING ANY IMPLIED WARRANTY OF MERCHANTABILITY, FITNESS FOR A PARTICULAR PURPOSE OR NON-INFRINGEMENT, ARE DISCLAIMED, EXCEPT TO THE EXTENT THAT SUCH DISCLAIMERS ARE HELD TO BE LEGALLY INVALID.

TABLE OF CONTENTS

1. INTRODUCTION	1
2. GETTING TO KNOW YOUR EZ BUS DT	2
A. PACKAGE CONTENTS	2
B. SYSTEM REQUIREMENTS	3
C. FRONT PANEL OF EZ BUS DT	3
D. REAR PANEL OF EZ BUS DT	4
3. HARD DRIVE INSTALLATION FOR EZ BUS DT KIT	5
4. CONNECTING YOUR EZ BUS DT	7
5. SOFTWARE	8
A. BEFORE YOUR BACKUP!	8
B. INSTALLATION OF EZ GIG II	9
C. CLONING YOUR HARD DRIVE WITH CLONE EZ	10
D. IMAGING YOUR HARD DRIVE WITH IMAGE EZ	15
E. INITIALIZING YOUR HARD DRIVE	17
F. REFORMATTING YOUR HARD DRIVE	21
G. CRYPTAINER	24
H. SECOND COPY	25
6. DISCONNECTING YOUR EZ BUS DT	26
7. CONTACTING TECHNICAL SUPPORT	27
8. RMA POLICY	27
9. WARRANTY CONDITIONS	28
10. FAQS	29

1. INTRODUCTION

Thank you for purchasing your EZ Bus Desktop system.

Engineered for desktop and notebook applications, the EZ Bus Desktop family of storage & backup products has three interfaces to choose from: USB 2.0 (EZ Bus DT), SATA (EZ Bus DTS) and USB2.0/FireWire Combo (EZ Bus DTC).

The EZ Bus DT kit comes with an extensive software bundle:

1. The award winning EZ Gig II backup and disaster recovery software is comprised of two separate programs providing complete protection for your entire computer system.

Clone EZ creates an exact bootable clone of your hard drive, thus providing a disaster recovery backup of your system. In the event of a hard drive failure, you could be back up and running in minutes.

Image EZ takes a snapshot of your entire system and compresses it into a file half its original size, thus enabling multiple backups to a single drive. This method saves hours of system rebuilding and is simple and easy to use.

2. Second Copy Synchronizing software provides a variety of options to synchronizing your system for file sharing or backup. The software is simple and easy to use, while taking only a few minutes to complete.

3. Cryptainer Encryption software secures your data with absolute privacy using Blowfish 128bit encryption. Cryptainer allows you to password protect and secure any file or folder. Simply drag and drop the files and folders you wish to hide and your data is safe and protected.

Backing up your valuable data has never been easier. The ultra-cool fan keeps the enclosure at optimal temperatures which will extend the life of your hard drive and data. With storage capacities up to 400GB, you'll have plenty of space not only to back up your entire system, but also for additional storage of all of your digital photos, emails, music and video files.

Regardless of whether you use a notebook, desktop PC, or MAC, EZ Bus Desktop units are the ideal backup and storage solution to add additional capacity to your system. Simply plug the unit into your port and instantly increase the storage capabilities of the computer.

2. GETTING TO KNOW YOUR EZ BUS DT

A. Package Contents



EZ Bus DT Enclosure



EZ Bus DTC Stand



USB Cable



EZ Gig II Software
and
Encryption and Synchronization Software



AC Adapter



AC Cable

B. System Requirements

To use the EZ Bus DT effectively, you will need the following minimum system setup:

Hardware:

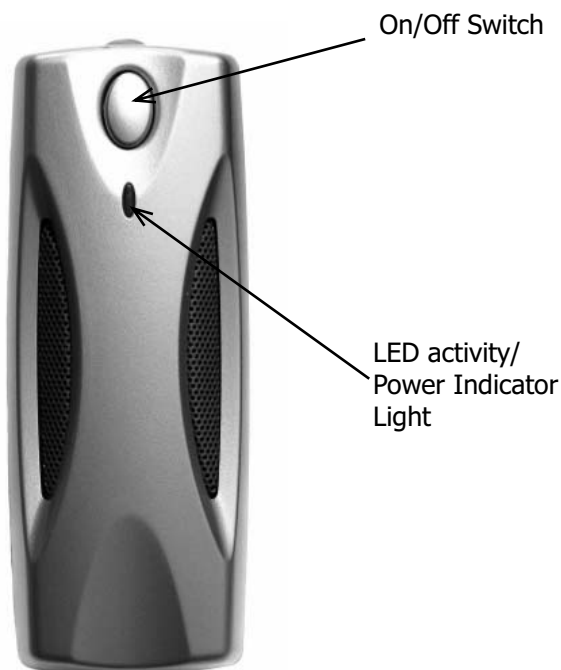
Pentium II 350MHz compatible process or higher
64MBs RAM
USB 2.0/1.1 or FireWire port
CD ROM drive

Operating Systems:

Microsoft:
Windows 2000 Professional
Windows XP Home and Professional

Apple:
Mac OS 9.X and later
Max OS X

C. Front Panel of EZ BUS DT



D. Rear Panel of EZ BUS DT

USB
Connection

AC Adapter
Connection

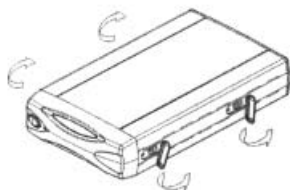


3. HARD DRIVE INSTALLATION FOR EZ BUS DT KIT

Only the EZ Bus DT Kit is shipped without a hard disk drive. If you have purchased an EZ Bus DT with a hard drive, proceed to section 4 (page 6).

To install your 3.5" hard disk drive, follow the instructions below:

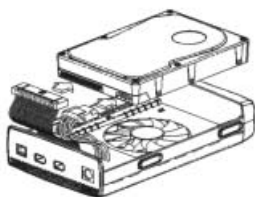
Step 1. Pull and rotate the rubber plugs located on the side of the enclosure.



Step 2. Gently remove the top cover from the enclosure. You should see two cables without anything attached to them. These will connect to your hard disk drive.



Step 3. Set your hard disk drive to Master (please consult your hard drive manufacturer/manual), then attach the flat cable and the power cable to the hard disk drive. Gently place the hard disk drive into the enclosure. Check to make sure the hard disk drive lines up with the screw holes on the enclosure.



Step 4. Replace the top cover by inserting the tabs into the slots on the bottom of the case.



Step 5. Insert the four screws provided in the places indicated and tighten the screws in place. Once this is complete, the top cover, hard disk drive and bottom case will be held securely together.



Step 6. Rotate and insert the rubber plugs into their original positions to cover up the exposed screw heads.



Step 7. You are now ready to use your EZ-Bus-DT. You will need to initialize your new hard drive, instructions for this are on page 17.



4. CONNECTING YOUR EZ BUS DT

1. Connect the USB cable to the USB port at the rear of the EZ Bus DT and to an available USB Port on your computer.
2. Connect the AC adapter at the rear of the EZ Bus DT and then plug into an available wall outlet or power strip.
3. Push the on switch located on the front of the EZ Bus DT. The indicator light will come on to let you know that the EZ Bus DT is powered.

5. SOFTWARE

A. Before You Backup!

With more of your work and personal life becoming digitized, backups are essential. Backups protect and preserve precious data, music files, digital photos, digital videos and other important computer documents from being lost forever.

Follow the next few steps before backing up to help the process run smoothly:

1. Ensure there are no file system errors by running **Windows Disk Cleanup** (or a similar disk cleanup utility) on your computer's internal hard disk drive.
2. Defragment your computer's internal hard disk drive by using **Windows Disk Defragmenter** (or a similar disk defragment utility).
3. Make copies of any important files or data to another drive.
4. Hard drive backups work best when done on a regular basis. Take a moment to establish a backup plan that works for you.

For example:

- a. Perform full backups (using Clone EZ, exact bootable clone of your hard drive) at the end of each month.

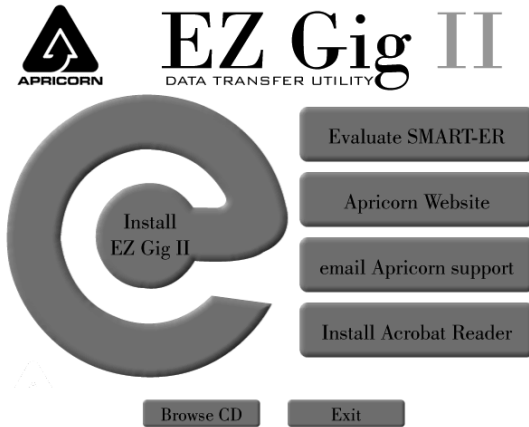
and/or

- b. Perform weekly backups (using Image EZ, compressed image of your entire hard drive or partition).

5. Once you have decided upon your plan, proceed to the appropriate sections in this manual to either use Clone EZ or Image EZ.

B. Installation of EZ Gig II:

1. Insert EZ Gig II CD into CD-ROM drive.
2. EZ Gig II screen (shown) will pop up.
3. Click on Install EZ Gig II.



4. Follow instructions for installation.



C. Cloning your hard drive with Clone EZ

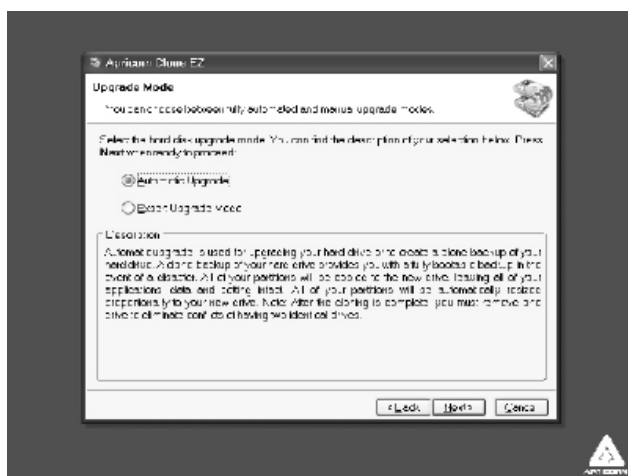
1. **Read all instructions carefully before cloning.** To clone your hard disk drive, your computer will need to boot directly to the EZ Gig II CD provided in the kit. These steps are just a quick overview of how to use Clone EZ. For detailed instructions and explanations, read the Clone EZ manual located on the EZ Gig II CD. If you are going to use your FireWire connection for cloning, you do not need to boot directly from the CD and can access through Windows (Start Programs Apricorn Apricorn EZ Gig II - click on Clone EZ and follow the directions).
2. Turn on your computer and change the BIOS setting so that the computer boots to the CD-ROM. **Consult your computer manufacturer or computer manual on how to make changes to the BIOS (basic input/output system). Apricorn will not have this information.**

Once you have accessed the BIOS and recorded the settings, change the boot sequence so that CD-ROM is the first selection. Save the changes and continue with cloning your hard drive.

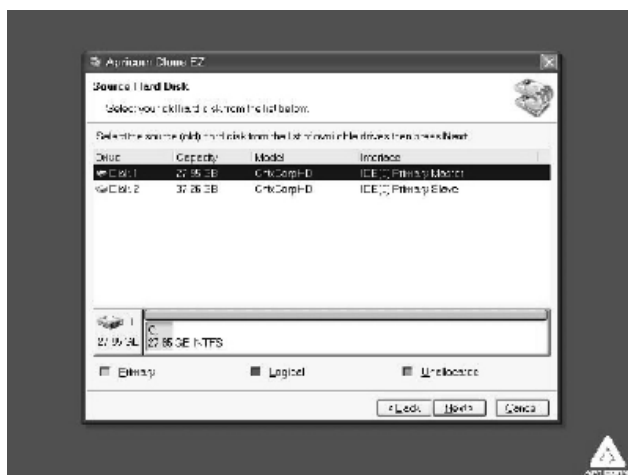
3. Open the CD-ROM drive. Place the EZ Gig II CD into the CD-ROM drive. Close the CD-ROM drive. Turn off your computer.
4. Ensure EZ Bus DT is connected to your computer using the USB cable provided (EZ Gig II may not work properly with a FireWire Connection). Also, be sure that the AC Adapter is attached to the EZ Bus DTC to supply power to the unit.
5. Turn on your computer. When EZ Gig II has successfully booted, you will see the "Welcome to Apricorn Clone EZ" screen. Click **Next** to continue.



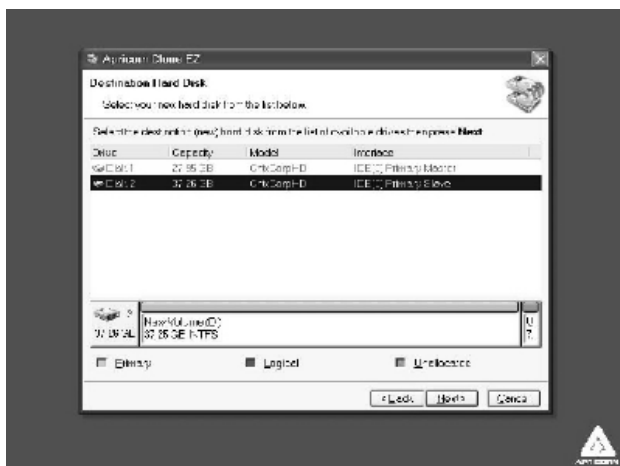
6. The “Upgrade Mode” screen will appear. Select “Automatic Upgrade” and click **Next** to continue.



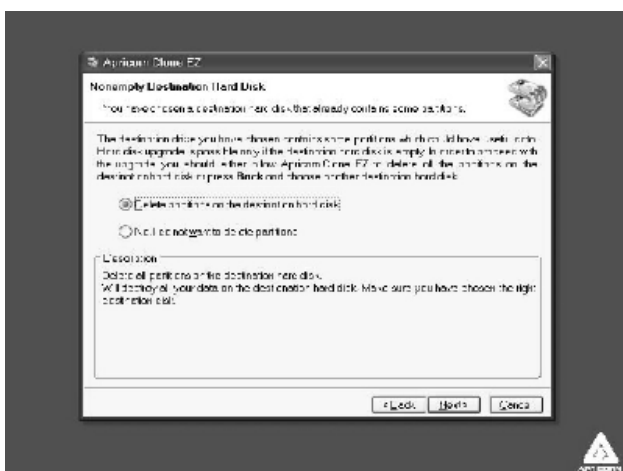
7. If the hard disk drive to receive the cloned data is new or blank, proceed to step 11. If the hard disk drive to receive the cloned data either contains data or is formatted, proceed to step 8.
8. The “Source Hard Disk” screen will appear. Select the appropriate source hard disk. The source hard disk is typically the old hard disk. Click **Next** to continue.



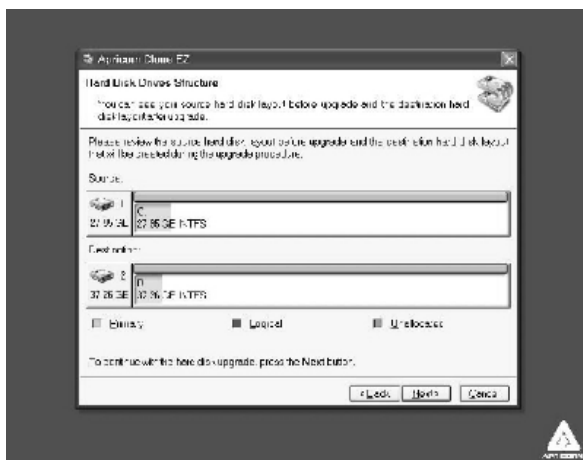
9. The “Destination Hard Disk” screen will appear. Select the appropriate destination hard disk. The destination hard disk is typically your new hard disk drive. Click **Next** to Continue.



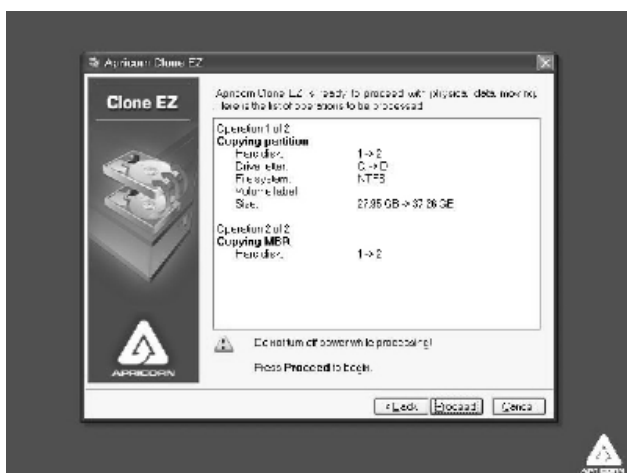
10. The “Nonempty Destination Hard Disk” screen will appear when you have selected to transfer data to a drive that already contains data. **If you need to confirm that you have selected the proper source and destination drives, click the *Back* button to check.** If you chose the proper source and destination drives, then select the “Delete partitions on the destination hard disk” button. Click **Next** to continue.



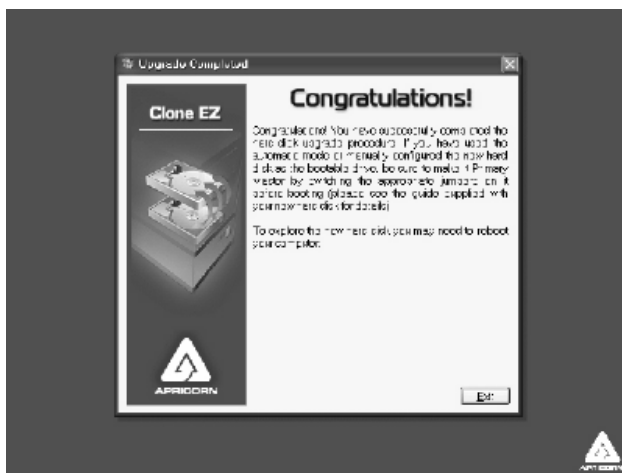
11. The “Hard Disk Drives Structure” screen will appear. This screen shows the source hard disk layout before the cloning process and the destination hard disk layout after the cloning process. Click **Next** to continue.



12. The next screen outlines the operations that Clone EZ will perform. Click **Next** to proceed with cloning your hard disk drive.



13. The cloning process will now begin. **Do not turn your computer off during this process. Let the process continue until you see the congratulations screen. When the congratulations screen appears, turn off your computer using the power button. Then unplug the EZ Bus DT from the computer. DO NOT REBOOT THE COMPUTER WITH A CLONED HARD DRIVE IN THE EZ BUS DT.** To do so may alter some settings of the Windows operating system.



14. You have completed the cloning process and now have an exact bootable clone of your hard drive.

D. Imaging your hard drive with Image EZ

1. Once you have installed the EZ Gig II, please consult the Image EZ manual, located on your EZ Gig II CD, for detailed instructions on using Image EZ.
2. **Under certain conditions, Apricorn EZ Gig II may require your computer to reboot. Please save all work before starting Apricorn EZ Gig II.**
3. To Start EZ Gig II, click the **Start** button, go to **Programs ▸ Apricorn ▸ EZ Gig II** and click on **Apricorn EZ Gig II**. This will open the main screen of EZ Gig II. You can also click on the **Apricorn EZ Gig II** icon on the Desktop.
4. Click on the **Create Image** icon from the main screen to open Image EZ.

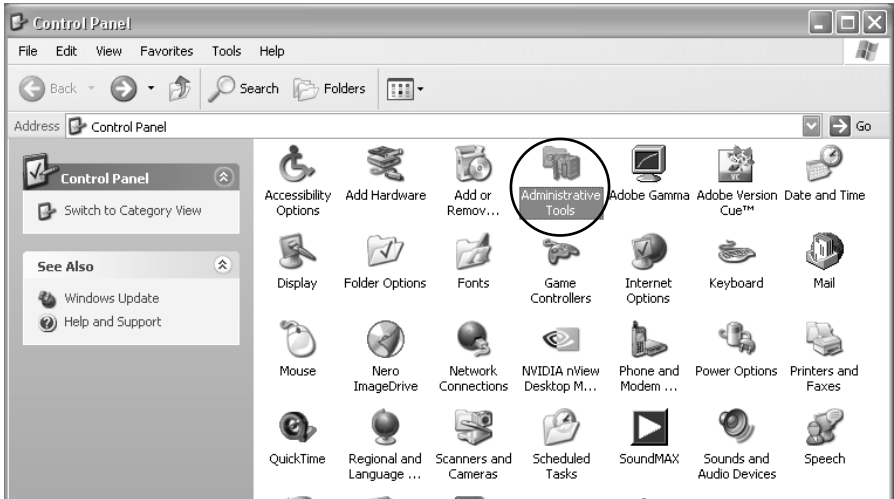


5. At the first screen, select the drive or partition(s) you would like to back up. A red line will appear under the drive or partition(s) chosen. After selecting the drive or partition(s), click **Next**.
6. This will open the Image Archive Location window. Select **Fixed hard disk** and click the **Next** button.
7. At the Image Archive Creation Window, find your EZ Bus DTC (it may have the name Apricorn, and the drive letter will vary depending on the configuration of your computer).

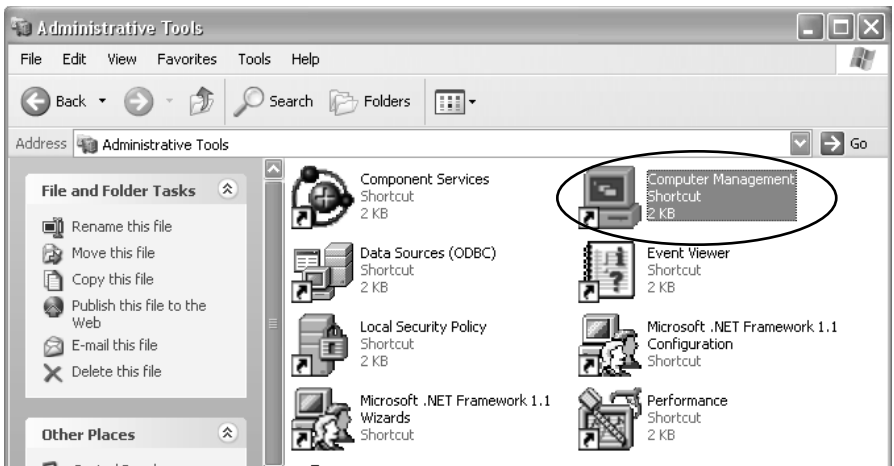
8. Enter the image name in the **File Name** text box, located near the bottom of the window. You can enter any name you wish. It might be a good idea to use the date, such as Jan2505 for January 25 2005. Click **Next** to continue.
9. The Compression Level window will open. In this window, you can optimize the creation of the image file to suit your needs. Lower compression level increases the speed the image file is created. Higher compression levels create smaller image files. The estimated size and time will be located in the description section of the window. Choose a compression level and click **Next** to continue.
10. The Image Archive Splitting window will open. Select **Automatic** and then click **Next** to continue.
11. The Image Archive Protection window will open. If you do not want to password protect your image, Click **Next** to continue. **If you enter a password, please remember the password for future use. If you forget the password, you will be unable to access the image file at a later date. Apricorn does not have the ability to retrieve the password.** Click **Next** to continue.
12. This will open the Image Archive Comments window. You can use this window to write comments about the image (such as the imaging date, computer, operating system, etc.). Click **Next** to continue.
13. This will open the Apricorn Image EZ Archive File Creation Script window. Verify the operations listed in the white box. If there are corrections to be made, click the **Back** button to change selected options. The selected operations **will not execute** until the Proceed button is clicked. If everything is correct, you can click the **Proceed** button to create the image file.
14. Image EZ completes the selected options and the Congratulations screen will appear.
15. **BACKUP COMPLETE!!!** The EZ Bus DT now contains a complete image of the selected drive or partition(s).
16. To learn more about the versatility of Image EZ, including restoring an image, please consult the Image EZ manual located on your EZ Gig II CD.

E. Initializing Your Hard Drive (self installed hard drives only)

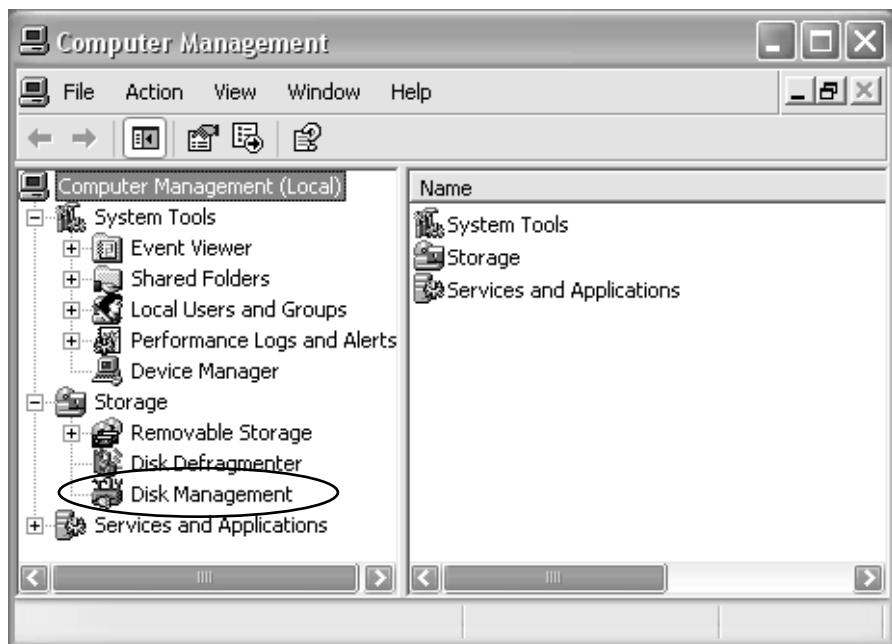
1. To initialize your hard drive, you will need to go to **Disk Management** in Windows. To get to Disk Management, you will need to click **Start ▶ Settings ▶ Control Panel**. If you purchased an EZ Bus DT that already has a hard drive, you do not need to use this section because the drive is already formatted for FAT32.
2. In the **Control Panel** window, double-click **Administrative Tools**.



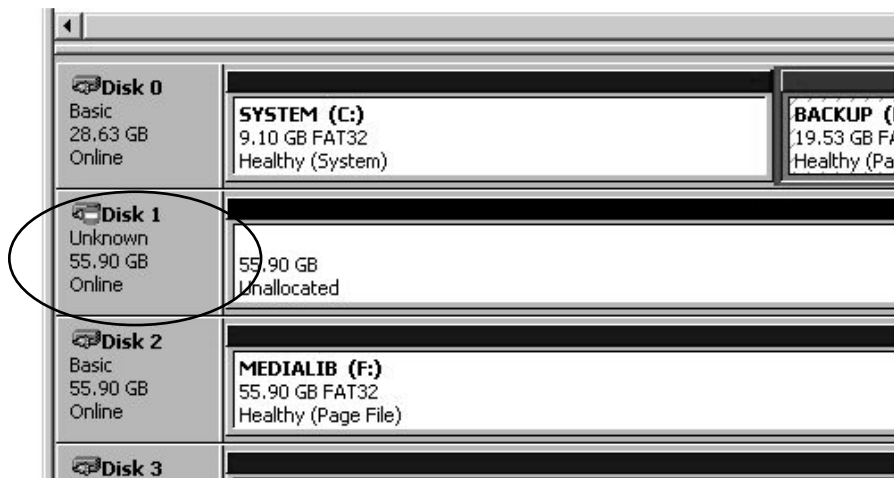
3. Once in **Administrative Tools**, double-click on **Computer Management**.



4. In **Computer Management**, you will find **Disk Management** under the **Storage** section. Double-click on **Disk Management**. Windows XP has a wizard to initialize new hard drives and may appear at this point. If the wizard does not appear, follow the remaining instructions.



5. You will be able to easily identify the new drive in **Disk Management**. The drive will show up as **Unknown** and **Unallocated** with a **red no entry sign** on the disk number.



6. Right click on the section to the left where the drive number and red no entry sign are located. Select **Write Signature**.
7. There are two types of disk storage that you can choose from: basic and dynamic. Select **Basic Storage** if you want to create partitions and logical drives on the disk. Select **Dynamic Storage** if you want to create simple volumes (dynamic disks cannot access MS-DOS or Microsoft Windows 98 or earlier versions). If you need further information on disk storage, please go to the Microsoft website.

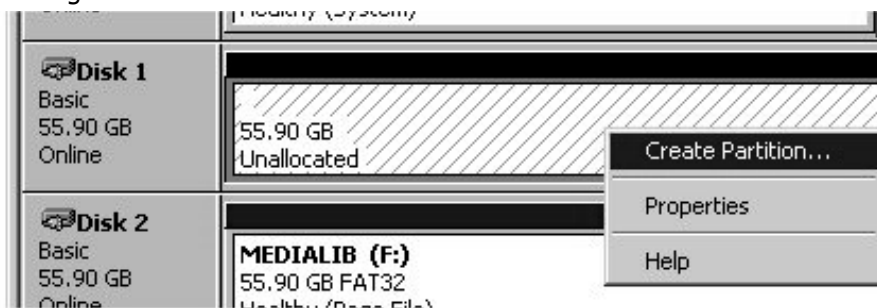
Partitioning/Formatting Your Hard Drive

1. Once you have selected your disk storage type, you will need to partition/format your drive. You will need to decide upon a file system: FAT32 or NTFS.

FAT32 limits the partition size to 32GB and the largest files that can be saved is 4GB.

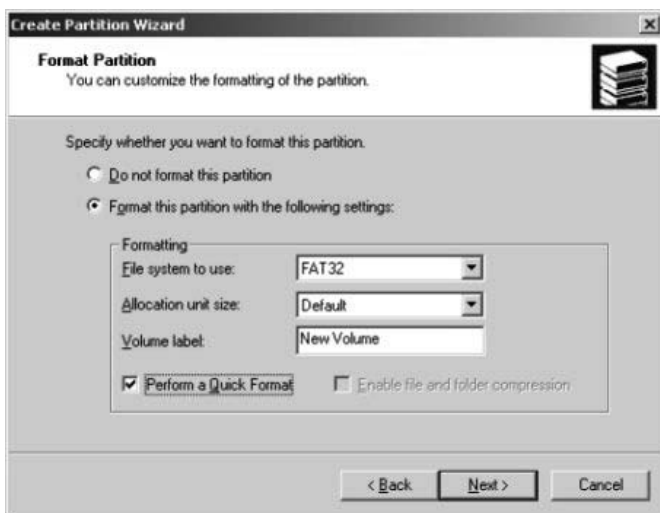
NTFS does not limit the partition size. The drawback to NTFS is that it cannot be read by older operating systems such as Windows 95/98 or ME.

2. Right click on the drive and select **Create Partition**.

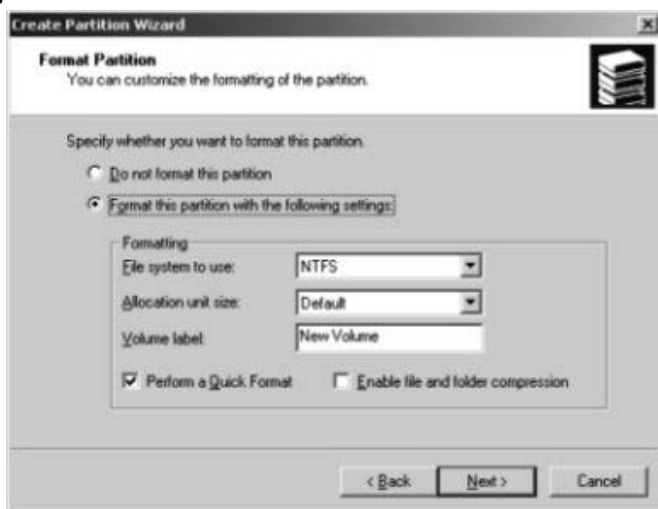


3. A Partition Wizard will initiate. Click **Next**.
4. Select **Primary partition** and click **Next**.
5. You will then need to decide on a partition size. Enter a partition size in the box provided. Click **Next**.
6. Select **Assign a drive letter**. Fill in the drive letter. Be sure to select a drive letter that is not in use. Click **Next**.

7. Now you will need to select either **FAT32** or **NTFS** for the file system to use. Make sure you check the box Perform a Quick Format - otherwise the format will take longer. Leave the Allocation unit size at Default. For the Volume Label, choose a label name that is meaningful to you.



For the **NTFS** set-up, you can also choose the **Enable file and folder compression**.



Click **Next**. You will have to wait a bit. When completed, the drive properties will be shown. You have completed partitioning and formatting your new hard drive. You can begin cloning or imaging (see relevant sections for instructions).

F. Reformatting Your Hard Drive

Your EZ Bus DT's hard drive is preformatted with the FAT32 Windows File System. While the FAT32 file system is visible to the largest number of operating systems, FAT32 does have limitations. You cannot save a file larger than 4GB. In Windows 2000 and XP, the partition size is limited to 32GB. The EZ Bus DT will be usable in your system, however we recommend that you reformat the hard drive in the following ways for the following operating systems:

To Reformat in Windows 2000 or XP (NTFS File System):

Caution: Reformatting your hard drive will destroy any data on the hard drive. Backup any data before you continue with this operation.

1. Make sure the EZ Bus DT is plugged into the USB port.
2. Open **My Computer** or **Windows Explorer**.
3. Right click on the EZ Bus DT drive and select **Format**.
4. This will open the format window:
 - a. In the **File system** drop down box, select NTFS.
 - b. Use **Default allocation unit** size.
 - c. Under **Format options**:
 - i. Select **Quick Format**.
 - ii. Do not **Enable Compression**.
 - d. Click on the **Start** button.
5. The drive will now be reformatted.
6. To verify the reformatting of the drive:
 - a. Go to **My Computer** or **Windows Explorer**, right click on the EZ Bus DT drive, and select **Properties** from the list.
 - b. This will open the EZ Bus DT hard drive properties. The **File System** should now read NTFS.

To Reformat in OS 9.x:

Caution: This will destroy any data on the hard drive. Backup any data before you continue with the reformatting of the EZ Bus DT hard drive.

1. Make sure the EZ Bus DT is plugged into the USB port.
2. Disable the file exchange in the **Extensions Manager**.
 - a. From the **Apple Menu**, select **Control Panel**, then **Extensions Manager**.
 - b. From the list: uncheck the on/off button next to the **File Exchange**.
 - c. Click **Restart**.

Your Macintosh will restart and you will get the following message:

"This disk is unreadable by this computer
Do you want to initialize the disk?"

3. Enter EZ Bus DT into the **Name** box.
4. From the drop down list, select **Mac OS Extended** and click the **Initialize** button. After the drive is initialized the drive named EZ Bus DTC will appear on your desktop.
5. To confirm that the EZ Bus DT hard drive is properly formatted, select the EZ Bus DT drive, then Select: **File, Get Info, General Information**. The drive should read Mac OS Extended.
6. You can now enable the file exchange extension.
 - a. From the **Apple Menu**, select **Control Panel, Extensions Manager**.
 - b. Check the on/off box next to **File Exchange**.
 - c. Click **Restart**.

To Reformat in Mac OS 10.

Caution: This will destroy any data on the hard drive. Backup any data before you continue with the reformatting of the EZ Bus DT hard drive.

1. Make sure the EZ Bus DT is plugged into the USB port. The drive should appear as a drive on your desktop.
2. Go to the "Utilities" folder and select **Disk Utilities**.
3. Select the drive from the list:
 - a. A description of the drive appears in the window.
 - b. Connection bus should be USB 2.0.
4. Select the **Erase** tab on the top of the window.
5. From the volume format drop down list, select the **Mac OS Extended**.
6. Enter EZ Bus DT into the **Name** box.
7. Select the check box next to **Install Mac OS 9 Drivers**. This will allow you to see your EZ Bus DT hard drive if you boot to Mac OS 9.x
8. Click the **Erase** button: An alert will appear to confirm the erase process.
9. Click the **Erase** button to start the formatting process.
10. To confirm that the EZ Bus DT hard drive is properly formatted, Select the EZ Bus DT drive, then Select: **File, Get Info**. The format should read Mac OS Extended.

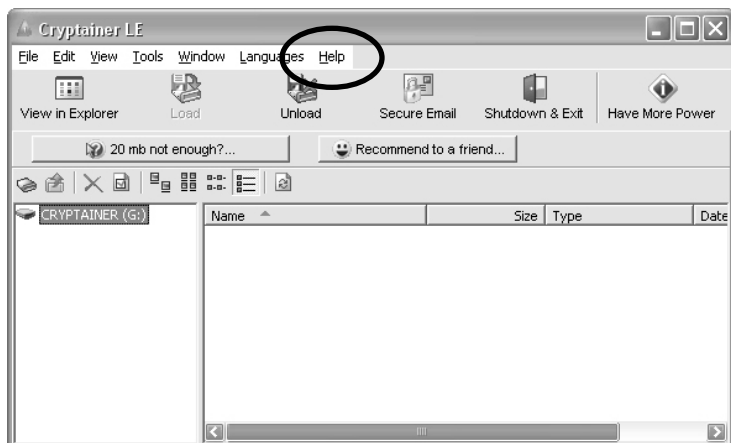
G. Cryptainer

Installation of Cryptainer:

1. Insert Cryptainer/Second Copy CD into CD-ROM drive.
2. Setup screen will pop up. Click **Cryptainer** button.
3. Follow instructions for installation.

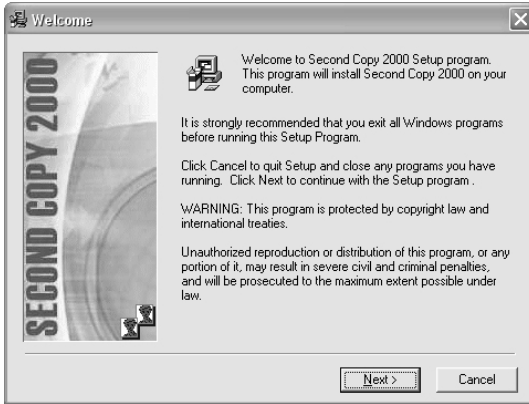


4. Upon completion of installation, you can immediately run Cryptainer LE by checking the box in the Setup Window. If you choose not to run Cryptainer LE immediately, you can always click the **Start** button and go to **Programs ▶ Cryptainer ▶ Cryptainer LE**.
5. To learn how to use Cryptainer, go to **Help ▶ Help Topics** when you open Cryptainer.

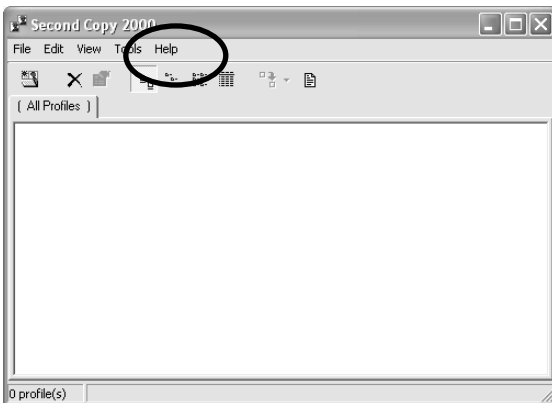


H. Second Copy

1. Insert Cryptainer/Second Copy CD into CD-ROM drive.
2. Setup screen will pop up. Click **Second Copy** button.
3. Follow instructions for installation.




4. Upon completion of installation, you can immediately run Second Copy by checking the box in the Setup Window. If you choose not to run Second Copy immediately, you can always click the **Start** button and go to **Programs ▶ Second Copy 2000 ▶ Second Copy 2000**.
5. To learn how to use Second Copy, go to **Help ▶ Help Topics** when you open Second Copy.



6. DISCONNECTING

Windows 2000 and XP

1. Click on the ***Safely Remove Hardware*** icon  in the system tray.
2. Follow the computer screen instructions to remove your EZ Bus DTC from your computer.

Macintosh

1. The drive will need to be dismounted. This can be done by dragging the drive to the ***Trash Can***.
2. Wait a few seconds. Once the LED has turned off, you can safely remove the drive.

7. CONTACTING TECHNICAL SUPPORT

Apricorn provides the following helpful resources for you:

1. Hardware Installation Section of the User's Guide.
2. Apricorn's Website (<http://www.apricorn.com>)
This gives you the ability to check for up-to-date information.
3. Email us at support@apricorn.com.
4. Or call the Technical Support Department at 1-800-458-5448.

Apricorn's Technical Support Specialists are available from 8:00 a.m. to 5:00 p.m., Pacific Standard Time from Monday to Friday.

8. RMA POLICY

An RMA (Return Merchandise Authorization) tracking number must be issued by Apricorn. If you need to return or replace your EZ Bus DT, Apricorn requires that you perform the following steps:

1. Simply call Apricorn's technical support department with your EZ Bus DT part number and a description of the problem(s) you are experiencing.
2. If the Apricorn representative finds cause for a return, they will issue an RMA number. Please write this number down.
3. Fill out an RMA authorization form with your package. The RMA form is available on-line at <http://www.apricorn.com/support/rma.php>.
4. Please send the prepaid package to the following address, make sure the RMA# is written on the exterior of the package:

Apricorn

RMA#: _____

12191 Kirkham Road

Poway, CA 92064

The purchaser shall be responsible for any loss or damage to the returned product until it is received by Apricorn. Purchaser should consider obtaining insurance with respect to shipping the product.

9. WARRANTY

Three-Year Warranty:

Apricorn offers a 3-year warranty on all notebook-based products (i.e. EZ Bus, EZ gig Notebook Hard Drive Upgrades, CardBus cards), and 12 months on all desktop-based products (i.e. VideoXB) against defects in materials and workmanship under normal use. The warranty period is effective from the date of purchase either directly from Apricorn or an authorized reseller.

Disclaimer and terms of the warranties:

THE WARRANTY BECOMES EFFECTIVE ON THE DATE OF PURCHASE AND MUST BE VERIFIED WITH YOUR SALES RECEIPT OR INVOICE DISPLAYING THE DATE OF PRODUCT PURCHASE.

APRICORN WILL, AT NO ADDITIONAL CHARGE, REPAIR OR REPLACE DEFECTIVE PARTS WITH NEW PARTS OR SERVICEABLE USED PARTS THAT ARE EQUIVALENT TO NEW IN PERFORMANCE. ALL EXCHANGED PARTS AND PRODUCTS REPLACED UNDER THIS WARRANTY WILL BECOME THE PROPERTY OF APRICORN.

THIS WARRANTY DOES NOT EXTEND TO ANY PRODUCT NOT PURCHASED DIRECTLY FROM APRICORN OR TO ANY PRODUCT THAT HAS BEEN DAMAGED OR RENDERED DEFECTIVE: 1. AS A RESULT OF ACCIDENT, MISUSE, NEGLIGENCE, ABUSE OR FAILURE AND/OR INABILITY TO FOLLOW THE WRITTEN INSTRUCTIONS PROVIDED IN THIS INSTRUCTION GUIDE; 2. BY THE USE OF PARTS NOT MANUFACTURED OR SOLD BY APRICORN; 3. BY MODIFICATION OF THE PRODUCT; OR 4. AS A RESULT OF SERVICE, ALTERATION OR REPAIR BY ANYONE OTHER THAN APRICORN AND SHALL BE VOID. THIS WARRANTY DOES NOT COVER NORMAL WEAR AND TEAR.

NO OTHER WARRANTY, EITHER EXPRESS OR IMPLIED, INCLUDING ANY WARRANTY OR MERCHANTABILITY AND FITNESS FOR A PARTICULAR PURPOSE, HAS BEEN OR WILL BE MADE BY OR ON BEHALF OF APRICORN OR BY OPERATION OF LAW WITH RESPECT TO THE PRODUCT OR ITS INSTALLATION, USE, OPERATION, REPLACEMENT OR REPAIR.

APRICORN SHALL NOT BE LIABLE BY VIRTUE OF THIS WARRANTY, OR OTHERWISE, FOR ANY INCIDENTAL, SPECIAL OR CONSEQUENTIAL DAMAGE INCLUDING ANY LOSS OF DATA RESULTING FROM THE USE OR OPERATION OF THE PRODUCT, WHETHER OR NOT APRICORN WAS APPRISED OF THE POSSIBILITY OF SUCH DAMAGES.

10. FAQs

1. What is USB 2.0?

USB 2.0 represents the next generation of PC peripherals and connectivity. USB 2.0 is the first major evolution of the Universal Serial Bus standard, which was originally designed to bring low cost connections and “plug-and-play” consumer devices to the PC world. USB 2.0 adds new functionality to your laptop, by allowing faster connections and greater flexibility without the need for upgrading your existing USB devices.

2. Why USB 2.0?

Modern PC peripherals can run faster and do more than the original USB designers ever dreamed. The USB standard was upgraded to keep pace with the rapid advances in technology, and the explosion of new consumer devices. USB 2.0 host controllers add the faster speeds and greater flexibility than these new devices require. USB 2.0 will allow your computer to connect to the newest USB devices: High-Speed Video and Ethernet, ultra-fast scanners and disk drives, etc.

3. How much faster is USB 2.0?

USB 1.1 devices can communicate at about 12 Megabits/sec. USB 2.0 devices can communicate at speeds of up to 480 Megabits/sec.

4. The computer installs the device but operates at the slower USB 1.1 speed.

The drive is connected to a standard USB connector on your computer and cannot communicate using the high-speed USB 2.0 protocol. Verify that the USB host controller supports USB 2.0 transfer rates and that the USB host controller has the correct device drivers installed. If you are using the USB 2.0 hard disk drive on a standard USB connector on your computer, the high-speed transfers are automatically disabled and the USB 2.0 hard disk drive will operate as a USB 1.1 device. For more information on connecting to USB connectors on your computer, refer to your User's guide.

5. The EZ Bus DT power LED is on, but the drive is not automatically detected by the operating system.

The mass storage device drivers are not installed correctly or there is a resource conflict in the system. Use the Windows Add New Hardware Wizard to detect the drive, or, if the drive has already been installed, use the Windows Update Device Driver Wizard. Be sure that there are no resource conflicts in the Windows Device Manager before installing the drive.

6. What software is included with my EZ Bus DT?

EZ Bus DT includes EZ Gig II, Cryptainer and Second Copy 2000.

EZ Gig II

EZ Gig II software for Windows is one of the most powerful yet easy to use backup utilities available. EZ Gig II is the second generation of the award winning EZ Gig Data Transfer Utility. It now supports transferring data via USB, PC Card, or internal IDE Bus. EZ Gig II is comprised of two modules: Clone EZ and Image EZ.

Clone EZ is ideal for users who require an exact bootable clone of their hard drive. A cloned copy of a hard drive can be used for disaster recovery backup, or as a hard drive upgrade. Backup: In the event of an internal hard drive failure, Clone EZ can upload the most recent clone of the failed hard drive from EZ Bus DT to a new hard drive. In an emergency situation the hard drive in EZ Bus DT can be removed from the enclosure and installed in the system with all data, applications & settings intact. Upgrade: The software automatically copies everything from the old drive and transfers it to the new drive. This method of upgrading is simple and easy to use.

Image EZ takes a snapshot of your entire system and compresses it into a file half its original size. This method takes up less space, thus allowing multiple backups to a single drive. Image EZ also includes a File Editor that allows the editing or restoration of individual files or folders. Image EZ also allows a password to be assigned to a backup image, providing security for your data. A detailed description for each image can be entered giving the user total flexibility to retain backups from multiple dates, or multiple computers.

Cryptainer LE protects your data by creating multiple encrypted vaults for all your files and folders. Secure your PC and ensure total privacy with Cryptainer LE's powerful 448 bit strong encryption without changing the way you work. You can choose from Blowfish or AES encryption algorithms. You can create a virtual drive of up to 2000 MB, that can be loaded and unloaded as required, with a password. You can drag and drop any kind of file that you wish to protect into the cryptainer drive. Cryptainer LE's secure e-mail module allows you to generate encrypted files that can be sent as e-mail attachments.

Second Copy 2000 allows you to synchronize folder from your internal hard drive to the EZ Bus DT. You can do the following:

- ◆ Simple Copy of directories and folders
- ◆ Exact Copy of directories and folders
- ◆ Move directories and folders
- ◆ PKZIP compatible compression
- ◆ Exact compression
- ◆ Two-way directory synchronization
- ◆ Archive up to 25 older versions of files

7. What is the difference between "cloning" and "imaging"?

Disk Cloning is a bit for bit copy of one drive to another. In doing so, a Clone can boot and run the operating system. The data is exactly the same on both drives.

Disk Imaging copies the data on the drive and stores it as a file. This file can be compressed to a smaller size to take up less space. The Image is not bootable.

8. Can I make a clone of my drive and put it in a different machine?

A clone is for disaster recovery purposes (i.e. when your drive fails and you need to get back up and running). No, you should not make a clone of your drive and put it in another or multiple machines. There are licensing issues for the software on your machine.

9. Is it possible to restore a single file from an image stored on my EZ Bus DT?

Yes. EZ Gig II allows you to mount an image as a “virtual” hard drive. You can access this “virtual” drive as if it were a physical hard drive. You would use your **Windows Explorer** or **My Computer** and copy the file or folder and paste it on to your hard drive.

10. Why am I unable to save a file larger than 4GB on to my EZ Bus DT?

Fat 32 has a file size limitation of 4GB. If you are using Windows 98 SE or ME, FAT32 is the only option you have available. If you are using Windows 2000 or XP, you can reformat the drive to NTFS. By reformatting the drive to NTFS, you eliminate the 4GB limitation, but you will also lose any data stored on the drive. Either reformat to NTFS before using it for the first time, or backup the data before reformatting.

11. I am unable to format my 80GB or larger EZ Bus DT with FAT 32 in Windows 2000 or XP?

Windows 2000 and XP limit a FAT32 partition to 32GB. If you choose to format the drive in a larger partition, you will need to use the NTFS file system.



APRICORN

12191 Kirkham Road
Poway, CA, U.S.A. 92064
1-858-513-2000