

Name of State Office: Charles P. White, Indiana Secretary of State

Contact Information: AJ Feeney-Ruiz, 317-233-8655, aj@sos.in.gov; Jerry Bonnet, 317-232-6534, jbonnet@sos.in.gov

Title of Program/Project: Who Are Your Elected Officials? – www.WhoAreYourElectedOfficials.IN.gov

Name of Project Lead: AJ Feeney-Ruiz, Deputy Chief of Staff and Director of Communications

Brief Description of Program/Project:

The “Who Are Your Elected Officials” website harnesses the power of Geographic Information Systems (GIS) technology to provide the general public an easy-to-use website for finding the elected officials who represent them. Users have the ability to easily and quickly find information on over 12,000 elected officials in the State of Indiana by either clicking a location on the map or by typing in their address. The information for each official (name, phone number, website and email address) is organized into tabs for Federal, State, County, Township, Municipal and School Districts. From our research, we believe that this is the most comprehensive site for disseminating elected officials’ information in the Union.

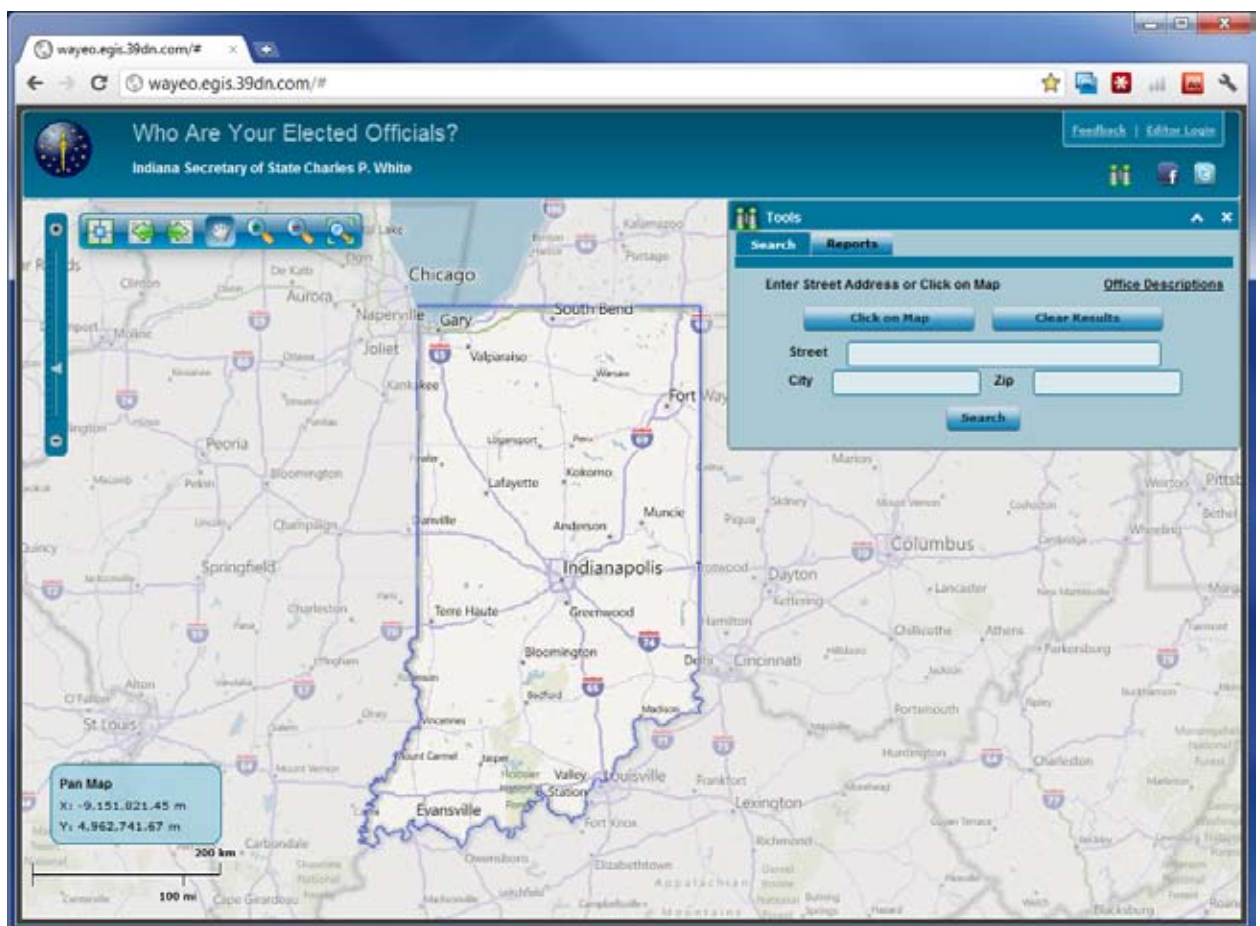
General Subject Area of Nomination: Elections

Executive Summary:

History:

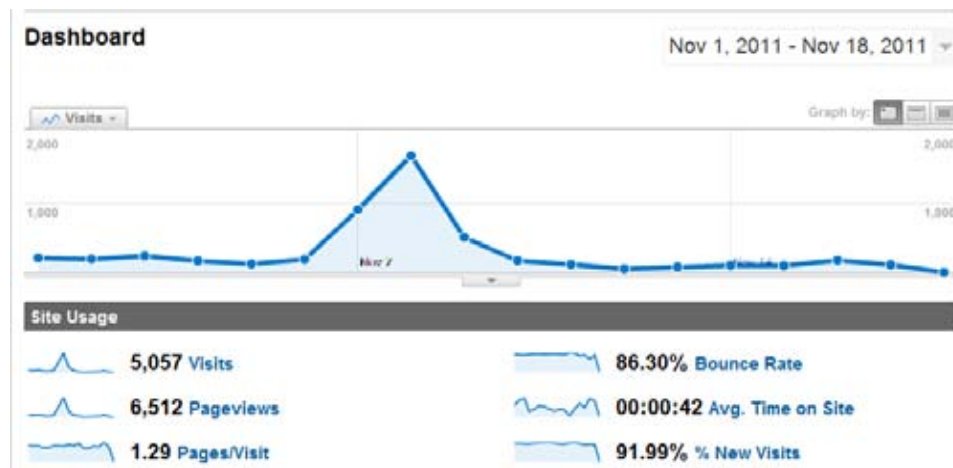
The “Who Are Your Elected Officials?” was launched in early September 2010 at www.WhoAreYourElectedOfficials.IN.gov. The goal of this program was to provide an application for the public to find out who their elected officials are without contacting government agencies or departments. The parties involved in creating this website were united in finding a simple, easy-to-use solution for their citizens to contact their elected officials. With such great collaboration, the State of Indiana has been able to assemble an application like none other in the sense that it has over 12,000 elected officials’ information and is extremely easy to use.

(Below) A screenshot (without results) of the “Who Are Your Elected Officials?” website for the State of Indiana.



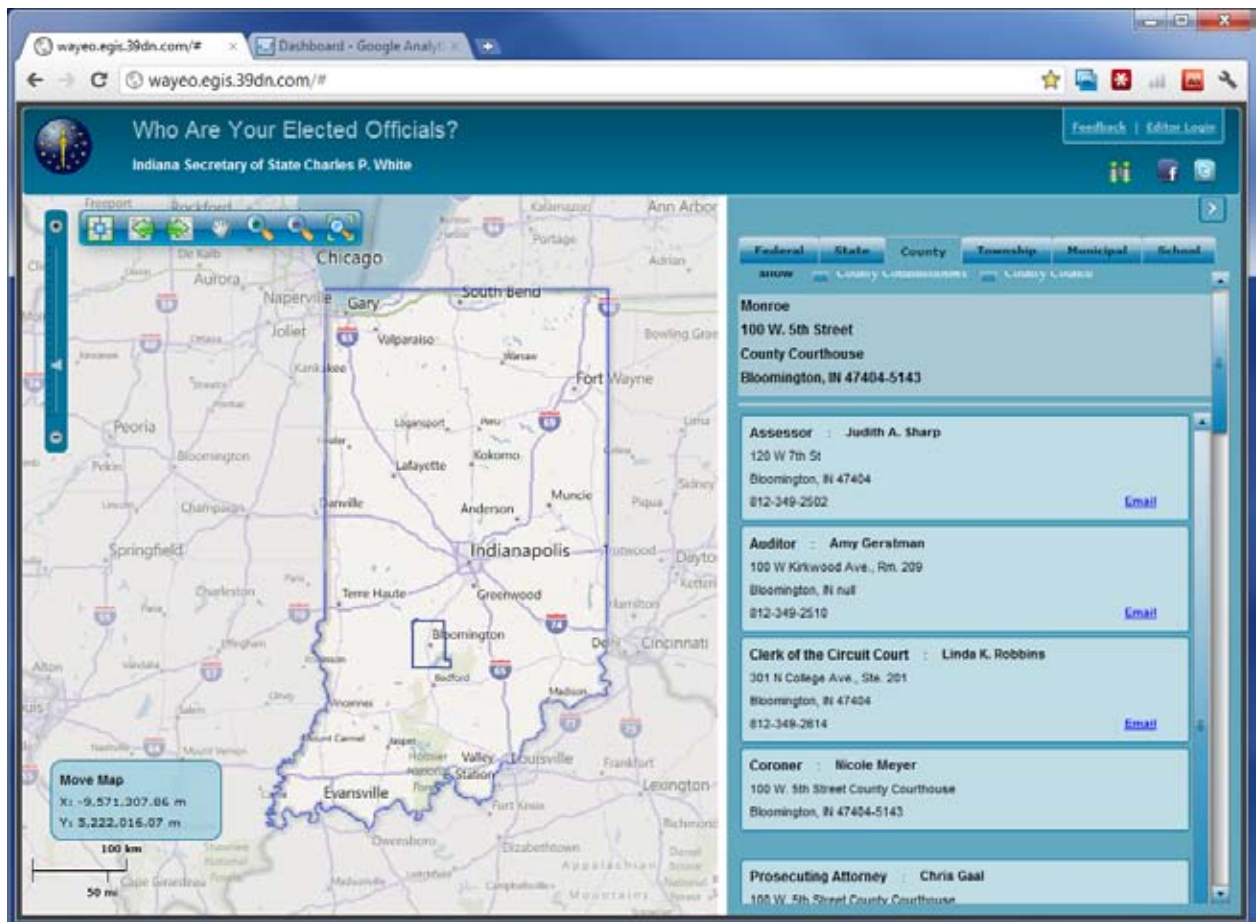
Significance:

With over 12,000 elected officials in the “Who Are Your Elected Officials?” application, it is an extremely useful tool for the public in collecting contact information regarding their elected officials. State and County Clerks’ offices across the State are receiving fewer phone calls from the public requesting contact information for their elected officials. Since its release in September 2010, the website has received over 62,000 visits. Spikes in traffic are related to events such as elections and when the President informs citizens to contact their elected officials. The screenshot below is from November 2011. Please note the increased traffic leading up to election day (each dot in the graph represents a day). On November the 8th, there were 1,693 visits in a single day.



The website is a one-stop-shop for all elected officials in the State of Indiana, whether it be a senator, governor, county commissioner, mayor or school board member. Every visit to the website is one less phone call or email being sent to a government employee to find out information about an elected official. By allowing users to access this information online, it reduces the time for users in obtaining this information and allows them to access it 24/7/365. Since time is money, this application saves tax payers money by not wasting the time of government employees by asking them the same questions over and over.

The screenshot on the next page shows how the results for Federal, State, County, Township, Municipal, and School Board information is organized once the user inputs their address or clicks on the map.



If a user has a question regarding the website, there is a feedback button that allows the user to email a member of the support team for additional support. All questions are addressed within a few hours of submission.

(Right) Since this information is dynamic in nature, county clerks and members of the Secretary of State's office have the ability to edit the data as needed. All changes are immediately made effective.

39° Elected Officials Administrator

egis.39dn.com/wayeo_edit/indiana_sen

Logout

Elected Officials Administrator

Indiana senate

Main / List / Read / New

Elected_office:	Indiana Senate
District:	s01
Party:	Democrat
Name:	Frank Mrvan, Jr.
Email:	s1@in.gov
Website:	http://www.in.gov/s1/
Legislation:	http://www.in.gov/apps/isa/session/billwatch/bilinfo?request=getLegis
Phone:	(317) 232-9432
Createdon:	
Modifiedon:	02/24/2011 10:35 AM
Modifiedby:	State
<input type="button" value="Save"/>	

Impacts / Results:

This program has contributed to the improved function of state government by providing contact information for elected officials. Many of the elected officials have websites that are linked to this application so the user can click on a website link for a specific official and get additional information such as a supported legislation. By saving valuable time of government employees in relaying contact information for elected officials, these employees are able to be utilized on other projects or tasks.

This application also saves time for the public who are trying to find the information. Often, the public may not even know who their elected officials are, which makes it nearly impossible to find the correct elected official. By searching an address, the information for the elected official serving that area is listed in an easily consumable format.

The application is simplistic in design and is able to serve any user. By simply typing in an address or selecting a location on the map, all elected officials from the President of the United States to the local School Board member is retrieved. Users of the application are able to download reports in Microsoft Excel format.

Another benefit to the statewide website has been to allow local governments relief from the burden of deploying their own applications to disseminate elected official contact information. This reduces the cost involved for the other government branches in having to create, maintain and monitor a site. It also eliminates 92 different applications and makes it homogenous across the State. Instead, the county governments provide a link to the "Who Are Your Elected Officials?" on their sites to encourage the public to obtain the information through the application.

In closing, since the site has become operational there have been 62,993 visits (as of November 2011). Each visit is approximately 1 minute in length. That is over 1,040 hours that the site has been used. Realistically, if a phone call had been placed in lieu of a visit to this site, that phone call would have approximately been 5-10 minutes in length as the person would spend time explaining what information they needed and then wait for the employee to find that information.

Supporting Information:

The following charts reference State's having similar applications. These 11 States were found within the first two pages of a Google Search for "Who Are Your Elected Officials."

Please note the vast amount of information provided by the State of Indiana in comparison to the other states.

State	URL	Results by Clicking on Map / Entering Address	Results	Level
CO	Link	Yes / No	US House	Federal
CO		Yes / No	State Senate	State
CO		Yes / No	State House	State
FL	Link	No / Yes	US Representative	Federal
FL		No / Yes	US Senators (Multiple Listings)	Federal
FL		No / Yes	State Senate	State
FL		No / Yes	State House	State
IN	Link	Yes / Yes	President	Federal
IN		Yes / Yes	Vice President	Federal
IN		Yes / Yes	US Senators (Multiple Listings)	Federal
IN		Yes / Yes	US Representative	Federal
IN		Yes / Yes	Governor	State
IN		Yes / Yes	Lieutenant Governor	State
IN		Yes / Yes	Secretary of State	State
IN		Yes / Yes	Auditor of State	State
IN		Yes / Yes	Treasurer of State	State
IN		Yes / Yes	Attorney General	State
IN		Yes / Yes	Superintendent of Public Instruction	State
IN		Yes / Yes	Indiana Senate	State
IN		Yes / Yes	Indiana House	State
IN		Yes / Yes	Chief Justice of Indiana	State
IN		Yes / Yes	Indiana Supreme Court (Multiple Listings)	State
IN		Yes / Yes	Chief Judge of the Indiana Court of Appeals	State
IN		Yes / Yes	Indiana Court of Appeals (Multiple Listings)	State
IN		Yes / Yes	Indiana Tax Court	State
IN		Yes / Yes	Assessor	County
IN		Yes / Yes	Auditor	County
IN		Yes / Yes	Clerk of the Circuit Court	County
IN		Yes / Yes	Coroner	County
IN		Yes / Yes	Prosecuting Attorney	County
IN		Yes / Yes	Recorder	County
IN		Yes / Yes	Sheriff	County
IN		Yes / Yes	Surveyor	County
IN		Yes / Yes	Treasurer	County
IN		Yes / Yes	Commissioner (Multiple Listings)	County
IN		Yes / Yes	Council (Multiple Listings)	County
IN		Yes / Yes	Superior Court (Multiple Listings)	County
IN		Yes / Yes	Superior Court-Civil (Multiple Listings)	County
IN		Yes / Yes	Superior Court-Criminal (Multiple Listings)	County

State	URL	Results by Clicking on Map / Entering Address	Results	Level
IN		Yes / Yes	Superior Court-Probate	County
IN		Yes / Yes	Circuit Court (Multiple Listings)	County
IN		Yes / Yes	Trustee	Township
IN		Yes / Yes	Board Member (Multiple Listings)	Township
IN		Yes / Yes	Small Claims Court Judge	Township
IN		Yes / Yes	Mayor	Municipal
IN		Yes / Yes	Council Member (Multiple Listings)	Municipal
IN		Yes / Yes	Council Member-At Large (Multiple Listings)	Municipal
IN		Yes / Yes	City Clerk	Municipal
IN		Yes / Yes	President	School Board
IN		Yes / Yes	Vice President	School Board
IN		Yes / Yes	Secretary	School Board
IN		Yes / Yes	Member (Multiple Listings)	School Board
KS	Link	Yes / No	US Representative	Federal
KS		Yes / No	Kansas House Representative	State
KS		Yes / No	Kansas Senator	State
KS		Yes / No	State Board of Education	State
MD	Link	No / Yes	US Senators (Multiple Listings)	Federal
MD		No / Yes	US Representative	Federal
MD		No / Yes	State Senator	State
MD		No / Yes	State Delegates	State
MN	Link	Yes / Yes	US House	Federal
MN		Yes / Yes	US Senators (Multiple Listings)	Federal
MN		Yes / Yes	Minnesota House	State
MN		Yes / Yes	Minnesota Senate	State
NY	Link	Yes / Yes	US Senators (Multiple Listings)	Federal
NY		Yes / Yes	US Representative	Federal
NY		Yes / Yes	Governor	State
NY		Yes / Yes	Lieutenant Governor	State
NY		Yes / Yes	State Senator	State
NY		Yes / Yes	State Assembly	State
PA	Link	Yes / Yes	US House	Federal
PA		Yes / Yes	US Senators (Multiple Listings)	Federal
PA		Yes / Yes	Pennsylvania House	State
PA		Yes / Yes	Pennsylvania Senate	State
TX	Link	No / Yes	US Senators (Multiple Listings)	Federal
TX		No / Yes	US Representative	Federal
TX		No / Yes	Texas Senate	State
TX		No / Yes	Texas House	State
WA	Link	Yes / Yes	US House	Federal
WA		Yes / Yes	US Senators (Multiple Listings)	Federal
WA		Yes / Yes	Washington Senate	State
WA		Yes / Yes	Washington House	State
WI	Link	No / Yes	US Representative	Federal
WI		No / Yes	US Senators (Multiple Listings)	Federal
WI		No / Yes	Wisconsin Assembly	State

Supporting Information (Continued):

<http://klflegal.wordpress.com/2010/09/16/who-are-your-elected-officials-indiana/>

Who Are Your Elected Officials, Indiana?

September 16, 2010 by Kenan Farrell

The [Indiana Secretary of State's Office](#) has just made finding out who represents you at all levels of government much easier, right down to the township and school board level.

"Who Are Your Elected Officials" is a new online database that allows you to put in your home address to generate a map and listing of your federal, state, county, township and school representatives.

Secretary of State Todd Rokita said the new database is the first of its kind in the nation.

More info: [The Elkhart Truth](#)



<http://www.wthitv.com/dpp/elections/indiana-elected-officials>

Video

Finding your Indiana elected officials

Updated: Thursday, 16 Sep 2010, 6:30 PM EDT

Published : Thursday, 16 Sep 2010, 5:52 PM EDT

TERRE HAUTE, Ind. (WTHI) - Do you know "who" represents you in state and local government?

If not, finding that information is now at your fingertips.

A new online tool allows Hoosiers to enter their address, then immediately find out who holds what offices in their city or town, in their county and even at the state and federal levels.

Using Geographic Information System technology, it also shows you voting boundaries, for things such as township offices or school board.

Indiana Secretary of State Todd Rokita says the site came together with the help of county clerks offices all over the state.

To find the website by clicking [here](#).

<http://www.journalgazette.net/article/20100915/BLOGS01/100919676>

Last updated: September 15, 2010 4:07 p.m.

Verbatim: Online tool pinpoints Indiana elected officials

Statement issued Wednesday:

INDIANAPOLIS – Indiana Secretary of State Todd Rokita announced today the release of a new online tool allowing Hoosiers to generate and view the names and responsibilities of each of their elected officials across federal, state and local government.

'Who Are Your Elected Officials,' is the first of its kind in the nation and supplies voters with a unique reference tool, accessing a comprehensive database showing the names, and in many cases contact information, of all federal, state, county and local officials elected to serve as well as their specific duties.

"Every Hoosier has at least 30 elected officials serving them in some public capacity throughout all levels of government," Secretary Rokita said. "This tool compiles this information into one place. The website provides a quick reference for voters and taxpayers about their elected officials while marking a giant step forward toward government transparency."

The new online tool, which can be found at www.WhoAreYourElectedOfficials.in.gov, uses Geographic Information System (GIS) technology and county precinct information to create an all-inclusive map of districts and voting boundaries. Hoosiers only need to provide an Indiana address in the search field to view a listing of every elected or appointed official who serves in their voting district, from president to township and school board offices.

Additionally, by using GIS technology, the online tool provides electronic maps showing the boundaries of corporations, cities and towns.

"No other state offers a more comprehensive online tool than 'Who Are Your Elected Officials' where individuals can quickly find out who their federal, state and local leaders are," Secretary Rokita said. "I am proud of the efforts of the Indiana Election Division, the Help America Vote Act team and each of the offices of our county clerks who worked together to make this online service a reality."

Along with a listing of names and offices, the online application will also feature reference sheets of the duties assigned to each office. This information was edited and adapted from the Indiana Chamber of Commerce's book, "Here Is Your Indiana Government."

The Secretary's Election Division has developed a number of new online features to educate and inform Hoosier voters in recent years. Along with 'Who Are Your Elected Officials,' Hoosiers can also check to see candidates running for public office on 'Who's On Your Ballot,' register to vote online, confirm voter registration or check the location of their polling place using www.IndianaVoters.com.

<http://www.in.gov/sos/3734.htm>

Indiana Secretary of State Todd Rokita announces the nation's first online comprehensive roster of elected officials

FOR IMMEDIATE RELEASE
September 15, 2010

'Who Are Your Elected Officials' enables Hoosiers to learn exactly who represents them in every office from federal to local levels

INDIANAPOLIS – Indiana Secretary of State Todd Rokita announced today the release of a new online tool allowing Hoosiers to generate and view the names and responsibilities of each of their elected officials across federal, state and local government. 'Who Are Your Elected Officials,' is the first of its kind in the nation and supplies voters with a unique reference tool, accessing a comprehensive database showing the names, and in many cases contact information, of all federal, state, county and local officials elected to serve as well as their specific duties.

"Every Hoosier has at least 30 elected officials serving them in some public capacity throughout all levels of government," Secretary Rokita said. "This tool compiles this information into one place. The website provides a quick reference for voters and taxpayers about their elected officials while marking a giant step forward toward government transparency."

The new online tool, which can be found at <http://www.whoareyourelectedofficials.in.gov/>, uses Geographic Information System (GIS) technology and county precinct information to create an all-inclusive map of districts and voting boundaries. Hoosiers only need to provide an Indiana address in the search field to view a listing of every elected or appointed official who serves in their voting district, from president to township and school board offices.

Additionally, by using GIS technology, the online tool provides electronic maps showing the boundaries of corporations, cities and towns.

"No other state offers a more comprehensive online tool than 'Who Are Your Elected Officials' where individuals can quickly find out who their federal, state and local leaders are," Secretary Rokita said. "I am proud of the efforts of the Indiana Election Division, the Help America Vote Act team and each of the offices of our county clerks who worked together to make this online service a reality."

Along with a listing of names and offices, the online application will also feature reference sheets of the duties assigned to each office. This information was edited and adapted from the Indiana Chamber of Commerce's book, "Here Is Your Indiana Government."

The Secretary's Election Division has developed a number of new online features to educate and inform Hoosier voters in recent years. Along with 'Who Are Your Elected Officials,' Hoosiers can also check to see candidates running for public office on 'Who's On Your Ballot,' register to vote online, confirm voter registration or check the location of their polling place using <http://www.indianavoters.com/>.